

HN65J2

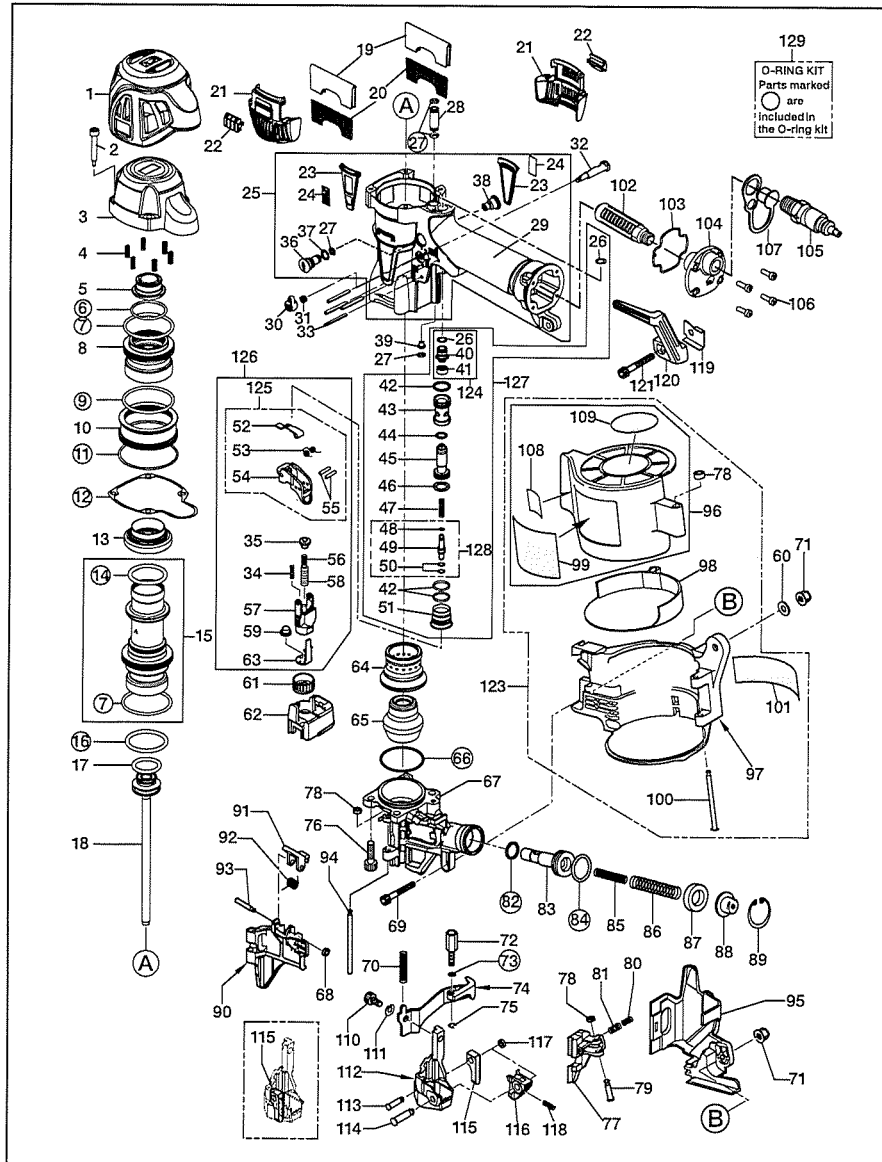
EXPLODED
VIEW AND SPARE
PARTS LIST

SCHEMA ECLATE ET
LISTE DES PIÉCES
DE RECHANGE

DESPIECE DE LA
MAQUINA Y LISTA
DE RECAMBIOS

EINZELTEILDAR-
STELLUNG UND
ERSATZTEILLISTE

ESPLOSO DEI
COMPONENTI ED
ELENCO DELLE
PARTI DI RICAMBIO



POS.	Art.-Nr.	Description
1	HN12517	CYLINDER CAP PROTECTOR
2	HN10338	SCREW 5X36
3	HN12764	CYLINDER CAP
4	KK23650	COMP. SPRING 3650
5	HN11364	PISTON STOP
6	HH19752	O-RING 1A 2X31
7	HH11136	O-RING ARP568-132
8	HN11396	HEAD VALVE PISTON
9	HH14906	O-RING AS 568-133
10	HN12128	HEAD VALVE GUIDE
11	HH14904	O-RING AS 568-032
12	HN11363	CYLINDER CAP SEAL
13	HN11370	CYLINDER SEAL
14	HH11135	O-RING AP31.5
15	HN81140	CYLINDER A ASSY
16	HH11174	O-RING 1A P35
17	HH11805	O-RING P22A
18	HN70532	MAIN PISTON UNIT
19	HN11376	FILTER B
20	HN11375	FILTER A
21	HN12054	EXHAUST COVER
22	HA11009	FIXING PLATE
23	HN12115	NAME RUBBER
24	PJ11961	NAME PLATE
25	HN81500	BODY UNIT
26	HH19127	O-RING A 1.5X5.5
27	HH19722	O-RING A1.5X5
28	HN11442	PIPE
29	HN12248	GRIP COVER
30	HN12123	TRIGGER LOCK DIAL
31	KK23507	SPRING 3507
32	CN35075	TRIGGER LOCK LEVER
33	FF21235	SPRING PIN 3X30
34	KK23129	COMPRESSION SPRING 3129
35	HN11420	ARM GUIDE PIN
36	HA18698	DUSTER STOPPER
37	HH19772	O-RING 1A 1.5X7.5
38	HN12742	BLIND CAP
39	HN10820	FEED NOZZLE
40	HN10043	PILOT CAP
41	HN10018	PILOT SEAL
42	HH12105	O-RING 1A 1.5 X 12.8
43	HN10016	TRIGGER VALVE HOUSING
44	HH11208	O-RING BP6
45	HN10017	PILOT VALVE
46	HH11132	O-RING 1AP10A
47	KK23619	COMP. SPRING 3619
48	HH19707	O-RING A1.4X2.5
49	HN11436	TRIGGER VALVE STEM
50	HH19214	O-RING 1B 1.5X3
51	HN12172	TRIGGER VALVE CAP
52	HN10100	CONTACT LVER
53	KK33300	SPRING 3300
54	HN10403	TRIGGER

55	FF22402	SPRING PIN 3X16
56	KK23735	COMP. SPRING 3735
57	HN11418	ARM GUIDE
58	KK23736	COMP. SPRING 3736
59	HN10357	CONTACT BUMPER
60	EE31105	PLAIN WASHER 1-6
61	HN10026	ADJUST DIAL
62	HN11389	ADJUST SPACER
63	HN11435	CONTACT ARM A
64	HN12089	CYLINDER B
65	HN12090	BUMPER
66	HH14164	O-RING AS 568-030
67	HN11411	NOSE
68	EE39609	RUBBER WASHER 1.8X6X2
69	BB40407	BOLT 5 X 20
70	KK23952	COPM. SPRING 3952
71	CC00401	ELASTIC STOP NUT M5
72	HN11417	CONTACT BOLT
73	HH11903	O-RING 1A 1.2 X 4
74	HN70119	CONTACT ARM B UNIT
75	JJ80010	E-RING 3.2
76	BB40213	BOLT 6 X 25
77	HN11412	FEED PAWL
78	EE39625	WASHER 7
79	FF41817	STEP PIN 1817
80	KK23788	COMP. SPRING 3788
81	KK23710	COMP. SPRING 3710
82	HH11113	O-RING AP9
83	HN11390	FEED PISTON
84	HH11106	O-RING AP16
85	KK23627	COMP. SPRING 3627
86	KK23896	COMP. SPRING 3896
87	CN32093	FEED PISTON STOP
88	HN10299	SPRING COLLER
89	JJ22408	C-RING 24
90	HN11413	DOOR
91	CN33679	DOOR LATCH
92	KK33353	SPRING 3353
93	FF41599	PIN 1599
94	FF31250	STRAIGHT PIN 1250
95	HN11428	ARM COVER
96	HN70539	MAGAZINE CAP ASSY
97	HN11552	MAGAZINE
98	CN34273	MAGAZINE SPACER
99	HN12776	MODEL NAME LABEL
100	FF41526	PIN 1526
101	HN12767	WARRNING LABEL
102	TA17024	FILTER A
103	HN12070	END CAP SEAL
104	HA18729	END CAP
105	HN70264	AIR PLUG H-FPM
106	BB40704	BOLT 4X12
107	HN10316	END PLUG CAP
108	HN11555	WARRNING LABEL B
109	HN12778	WARRNING LABEL ISO

110	BB40412	SCREW 6MM X 12MM
111	EE11101	SPRING WASHER 2-6
112	HN11414	CONTACT NOSE
113	FF41849	STEP PIN 1849
114	FF41848	STEP PIN 1848
115	HN11426	AIMING GUIDE LOCATOR
116	HN11415	NAIL LEG GUIDE
117	EE39620	RUBBER WASHER 4X7X2.5
118	KK23933	COMP. SPING 3933
119	HN11434	HOOK STOPPER
120	HN10739	HANGER
121	BB40432	SOC.HD.CAP SCREW
123	HN70537	MAGAZINE ASSY
124	HN81216	PILOT CAP ASSY
125	HN80079	TRIGGER ASSY
126	HN81092	ARM GUIDE KIT ASSY
127	HN81502	TRIGGER VALVE KIT ASSY
128	HN81099	TRIGGER VALVE STEM ASSY
129	HN81501	O-RING KIT
	TA81014	STEP PIN KIT
	HN70522	CARRYING CASE ASSY