

# HVR41G4(CE)

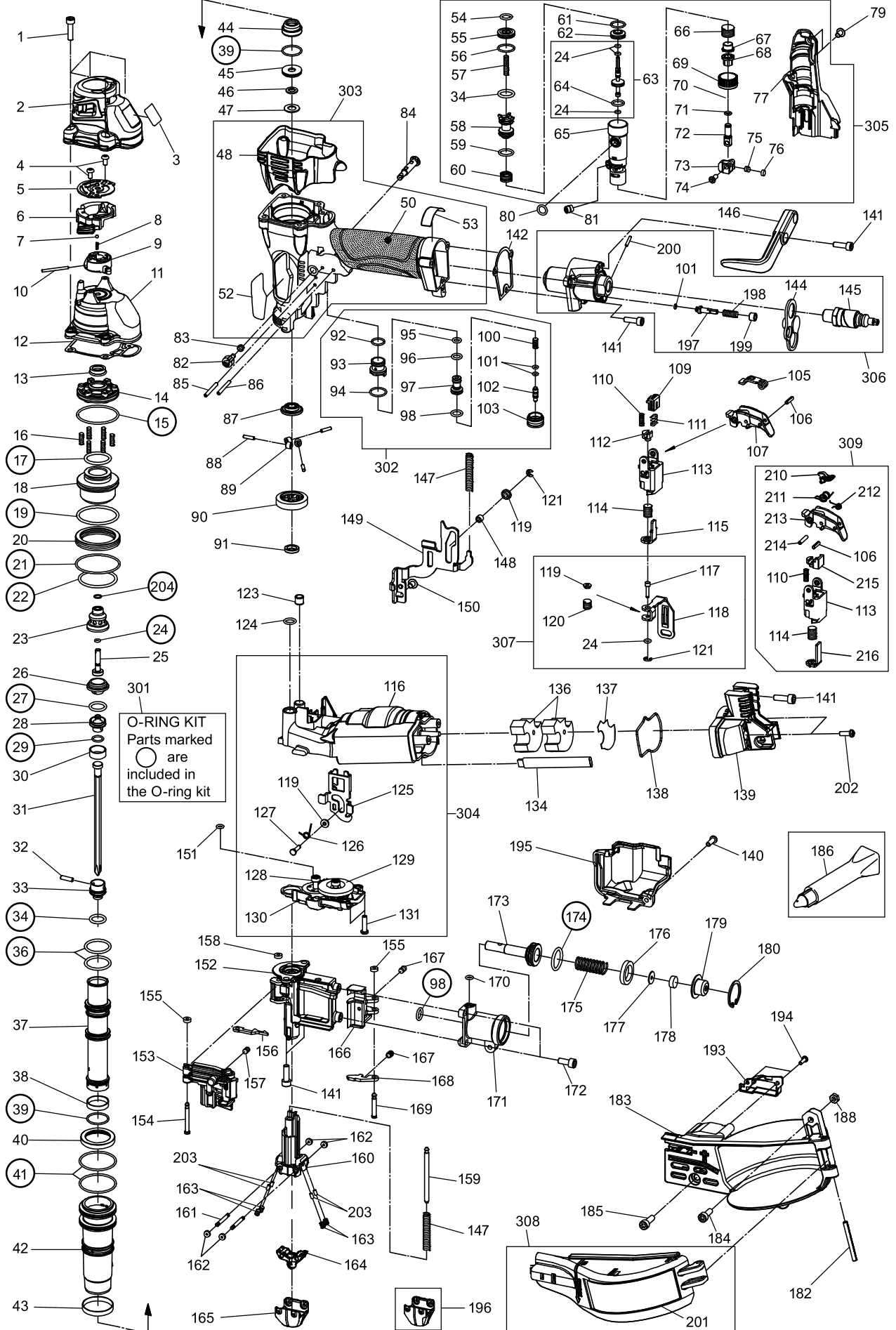
EXPLODED  
VIEW AND SPARE  
PARTS LIST

EINZELTEILDAR-  
STELLUNG UND  
ERSATZEILLISTE

SCHEMA ECLATE ET  
LISTE DES PIÈCES  
DE RECHANGE

ESPLOSO DEI  
COMPONENTI DE  
ELENCO DELLE  
PARTI DI RICAMBIO

DESPIECE DE LA  
MAQUINA Y LISTA  
DE RECAMBIOS



# MAX HVR41G4 - Parts List

Part No.	Part Code	Description
1	BB40210	SCREW M5X20
2	FS14449	CYLINDER CAP PROTECTOR
3	FS13774	INSTRUCTION LABEL
4	BB41406	SCREW 4X8
5	FS14377	DIAL PLATE
6	FS14376	DIAL GUIDE
7	LL71806	STEEL BALL 3
8	KK23981	COMPRESSION SPRING 3981
9	FS14375	CHANGEOVER DIAL
10	FF31581	PIN 1581
11	FS14347	CYLINDER CAP
12	FS14351	CYLINDER CAP SEAL
13	FS13447	EXHAUST SEAL
14	FS14348	HEAD VALVE GUIDE A
15	HH19763	O-RING A 2X39.5
16	KK23650	COMP SPRING 3650
17	HH11147	O-RING ARP568-119 N10013
18	FS13451	HEAD VALVE PISTON
19	HH19708	O-RING A 2.6X39.5
20	FS13452	HEAD VALVE GUIDE B
21	HH14151	O-RING AS568-029
22	HH14159	O-RING AS568-127
23	FS14350	PISTON STOP HOLDER
24	HH19707	O-RING A1.4X2.5
25	FS14346	CHANGEOVER SHAFT
26	FS13448	PISTON STOP
27	HH11224	O-RING B P14
28	FS14400	PISTON CAP
29	HH19117	O-RING A 1.5X8
30	FS13820	PISTON BAND
31	FS14355	BIT
32	FF31539	STRAIGHT PIN 1539
33	FS14387	MAIN PISTON
34	HH11131	O-RING AP11 *
36	HH11108	O-RING AP22
37	FS14352	CYLINDER
38	FS14353	CHECK VALVE
39	HH19170	O-RING A 1.5X18.2
40	FS13458	CYLINDER RING SEAL
41	HH14028	O-RING AS568-028
42	FS14354	CYLINDER GUIDE
43	FS13808	CHECK VALVE B
44	FS13464	BUMPER
45	FS13559	BIT GUIDE
46	FS13561	BIT RING

47	EE39910	PLAIN WASHER 8.5X15X1
48	FS14369	BODY PROTECTOR
50	HA10971	GRIP COVER
52	FS14384	LOGOTYPE LABEL
53	FS13775	OIL CAUTION LABEL
54	HH19131	O-RING A 1.9X9.2
55	FS14360	STOP VALVE CAP
56	HH19746	O-RING A 1.5X15.5
57	KK23980	COMPRESSION SPRING 3980
58	FS14362	STOP VALVE PISTON
59	HH19754	O-RING A 1.9X11
60	KK23954	COMPRESSION SPRING 3954
61	HH12105	O-RING 1A 1.5 X 12.8 N5521
62	FS14381	STOP VALVE STEM GUIDE
63	FS81058	STOP VALVE STEM ASSY
64	HH11165	O-RING ARP568-012
65	FS14359	STOP VALVE HOUSING
66	KK23982	COMPRESSION SPRING 3982
67	FS14380	ADJUST COLLAR
68	FS14700	ADJUST NUT
69	HN10026	ADJUST DIAL
70	CN33995	STOPPER
71	HH11903	O-RING 1A 1.2 X 4 T29051(REPLACES TA15277)
72	FS14364	CONTACT BOLT
73	FS14366	SELECTOR SWITCH
74	FS14365	SELECTOR SHAFT B
75	KK23955	COMPRESSION SPRING 3955
76	FS14367	WASHER
77	FS14368	STOP VALVE COVER
79	BB41408	BUTTON SCREW 5X8
80	HH11117	O-RING AP8 CN65033
81	FS13556	PIPE
82	CN35074	TRIGGER LOCK DIAL
83	KK23507	SPRING 3507
84	CN35075	TRIGGER LOCK LEVER
85	FF21254	PIN 3 X 28 N10038
86	FF21279	PIN 3X26
87	FS70125	GEAR GUIDE A UNIT
88	FF31538	PIN 1538
89	FS14337	GEAR ROLLER
90	FS14336	GEAR E
91	FS14373	GEAR GUIDE B
92	HH19720	O-RING A 1.5X11.5
93	TA16092	TRIGGER VALVE HOUSING
94	HH19721	O-RING 1A 1.5X13.6
95	HH11119	O-RING AP6 N10027
96	HH11209	O-RING 1BP7 N10028
97	TA16091	PILOT VALVE

<b>98</b>	HH11113	O-RING AP9 N5528
<b>100</b>	KK23666	COMPRESSION SPRING 3666
<b>101</b>	HH11901	O-RING 1.4 X 2.5 CN65020
<b>102</b>	TA16090	TRIGGER VALVE STEM
<b>103</b>	TA16089	TRIGGER VALVE CAP
<b>105</b>	TA17137	CONTACT LEVER
<b>106</b>	FF22412	ROLL PIN 3X12
<b>107</b>	TA17136	TRIGGER
<b>109</b>	CN34800	LEVER
<b>110</b>	KK23282	COM. SPRING 3282
<b>111</b>	CN34500	LEVER SPRING
<b>112</b>	FS14399	ARM GUIDE PIN
<b>113</b>	CN36243	ARM GUIDE
<b>114</b>	KK29027	COMPRESSION SPRING 9027
<b>115</b>	CN36244	CONTACT ARM A
<b>116</b>	FS81087	AIR MOTOR ASSY
<b>117</b>	FS14389	CONTACT PIN
<b>118</b>	FS14340	CONTACT ARM B
<b>119</b>	FS14342	ROLLER A
<b>120</b>	KK29013	COMPRESSION SPRING 9013
<b>121</b>	JJ10104	E-RING 2.3
<b>123</b>	FS13554	PIPE
<b>124</b>	HH19913	O-RING1.8X8
<b>125</b>	FS14335	BLOCK PLATE
<b>126</b>	KK33368	TORSION SPRING 3368
<b>127</b>	FS14341	ROLLER PIN
<b>128</b>	FS70076	GEAR C UNIT
<b>129</b>	FS70074	GEAR B UNIT
<b>130</b>	FS70075	GEAR BOX B ASSY
<b>131</b>	AA04504	TAP TIGHT (B)4X16 CF
<b>134</b>	FS81052	FILTER ASSY
<b>136</b>	FS14334	EXHAUST FILTER 1
<b>137</b>	FS14333	EXHAUST FILTER 2
<b>138</b>	FS14657	MOTOR BRACKET SEAL
<b>139</b>	FS14597	MOTOR BRACKET
<b>140</b>	AA21574	PAN HEAD SCREW 4X12 CF
<b>141</b>	BB40223	SCREW M5X16
<b>142</b>	FS13544	END CAP SEAL
<b>144</b>	HN10316	END PLUG CAP
<b>145</b>	HN70264	AIR PLUG H-FPM
<b>146</b>	CN35200	HOOK
<b>147</b>	KK29042	COMPRESSION SPRING 9042
<b>148</b>	FS14343	ROLLER B
<b>149</b>	FS70173	CONTACT ARM C UNIT
<b>150</b>	BB41409	SCREW M5X6
<b>151</b>	HH11115	O-RING AP3 N10032/N5569
<b>152</b>	FS14659	NOSE
<b>153</b>	FS70171	DOOR

154	FF41819	SETP PIN 1819
155	EE39602	WASHER 7
156	FS13529	CHECK PAWL
157	KK23754	COMPRESSION SPRING 3754
158	EE39625	RUBBER WASHER
159	FF31606	PIN 1606
160	FS14660	NOSE TOP
161	FF41852	STEP PIN 1852
162	EE39609	RUBBER WASHER 1.8X6X2
163	KK23953	COMPRESSION SPRING 3953
164	FS14791	VERTICAL GUIDE
165	FS14316	CONTACT TOP
166	FS13521	FEED PAWL
167	KK23457	COM. SPRING 3457
168	FS13523	CONTACT STOPPER
169	FF41820	STEP PIN 1820
170	HH19125	O-RING A1.6X4.2 CN65064
171	FS14393	NOSE B
172	BB40406	SCREW M5X12
173	FS13522	FEED PISTON
174	HH11107	O-RING AP18
175	KK23899	COMP SPRING 3899
176	CN31953	CN37368 REPALCED FEED PISTON STOP
177	EE39907	WASHER 3.1X12X0.8
178	FS13778	FEED FILTER
179	CN37995	SPRING COLLAR
180	JJ22408	C-RING 24
182	FF22203	W.S. PIN 4X40(FORMER FF21222)
183	FS70168	MAGAZINE UNIT
184	BB40408	BOLT 5X14
185	BB40310	HEX BOLT 5X16
186	TT05211	MOLYKOTE GREASE EM-30L
188	CC43401	NUT
193	FS14397	SENSOR COVER
194	AA21580	PAN HEAD SCREW 3X10 CF
195	FS14318	ARM COVER
196	FS14317	CONTACT TOP L
197	CN31069	RELIEF VALVE STEM
198	KK23100	SPRING 3100 CN65022 (OBSOLETE)
199	CN35194	SPACER
200	FF21205	ROLL PIN 2.5X12 N5564
201	FS14821	WARNING LABEL
202	AA05590	TAP TIGHT(B)4X20 CF +BIND
203	FS14684	VERTICAL GUIDE BUMPER
204	HH12904	O-RING A 1X6.2 N5536
210	TA16138	S.T. LEVER
211	KK33247	SPRING 3247
212	KK33252	TORSION SPRING 3252

<b>213</b>	CN36293	TRIGGER
<b>214</b>	FF22402	SPRING PIN 3X16 (LIGHT LOAD)
<b>215</b>	FS14415	CONTACT ARM A GUIDE
<b>216</b>	CN36291	CONTACT ARM A
<b>301</b>	FS81086	O-RING KIT
<b>302</b>	TA80140	TRIGGER VALVE ASSY
<b>303</b>	FS81082	BODY ASSY (HVR41G4-CE)
<b>304</b>	FS81085	AIR MOTOR ASSY
<b>305</b>	FS70086	STOP VALVE ASSY
<b>306</b>	FS70119	END CAP ASSY
<b>307</b>	FS70132	CONTACT ARM B ASSY
<b>308</b>	FS81083	MAGAZINE CAP ASSY
<b>309</b>	FS81062	ST KIT