

CN452S(CE) PNEUMATIC COIL NAILER

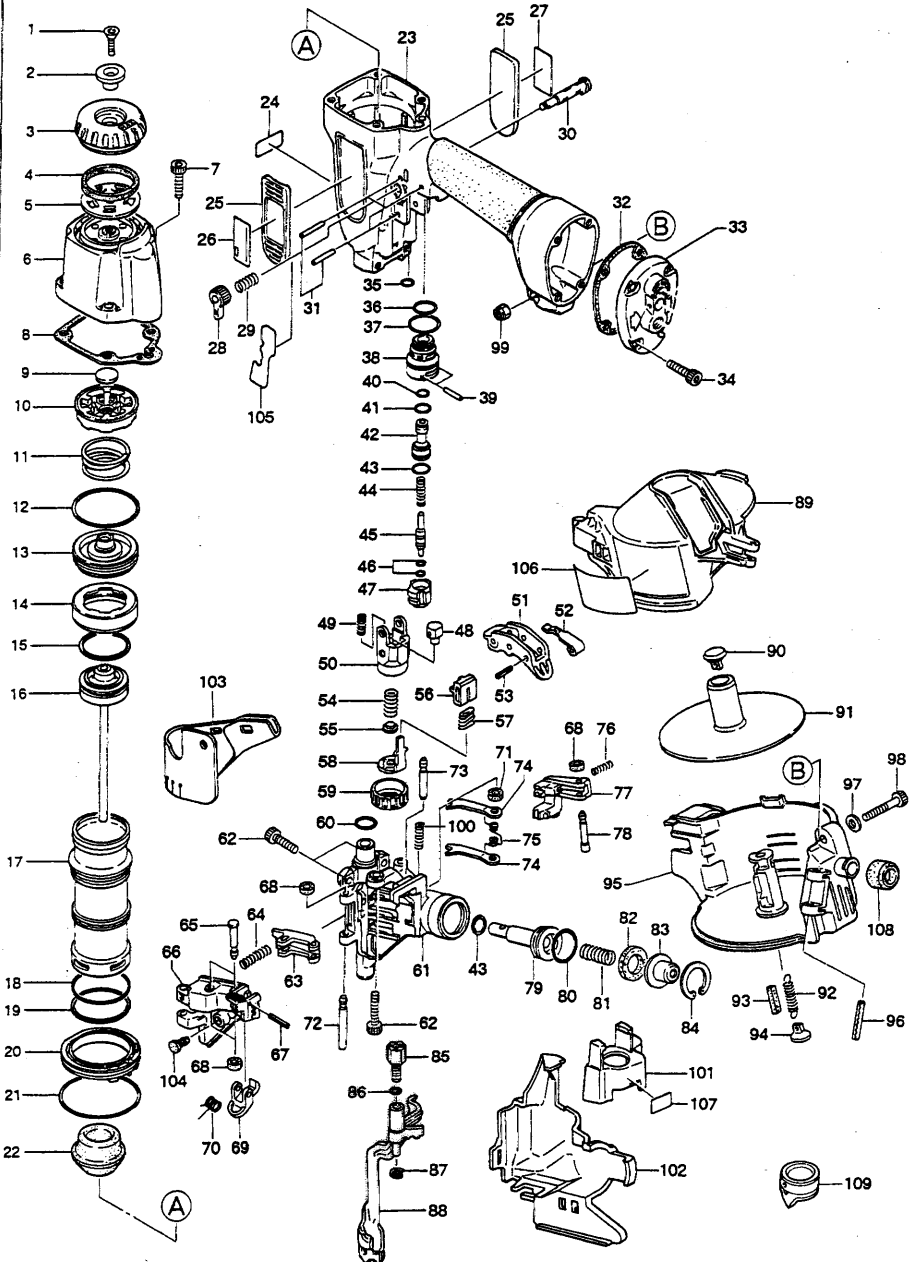
EXPLODED
VIEW AND SPARE
PARTS LIST

EINZELTEILDAR-
STELLUNG UND
ERSATZEILLISTE

SCHEMA ECLATE ET
LISTE DES PIÉCES
DE RECHANGE

ESPLOSO DEI
COMPONENTI ED
ELENCO DELLE
PARTI DI RICAMBIO

DESPIECE DE LA
MAQUINA Y LISTA
DE RECAMBIOS



MAX CN452S(CE) - Parts List

1	AA82435	SCREW M6X20
2	CN35129	EXHAUST COVER HOLDER
3	CN35173	EXHAUST COVER
4	CN35174	EXHAUST FILTER A
5	CN35175	EXHAUST FILTER B
6	CN35172	CYLINDER CAP
7	BB40209	HEX. BOLT 5X25
8	CN35176	CYLINDER CAP SEAL
9	CN35180	EXHAUST SEAL
10	CN35178	HEAD VALVE GUIDE
11	KK23651	COMPRESSION SPRING 3651
12	HH11141	O-RING ARP568-130
13	CN35177	HEAD VALVE PISTON
14	CN35179	CYLINDER SEAL
15	HH11221	O-RING 1BP30
16	CN35181	MAIN PISTON UNIT
17	CN35184	CYLINDER
18	HH11146	O-RING ARP568-128 N10003
19	HH11183	O-RING 1AP39
20	CN35185	CYLINDER RING
21	HH11136	O-RING ARP568-132
22	CN35186	BUMPER
23	CN80440	FRAME UNIT
24	CN34309	PLASTIC SHEET LABEL (100421)
25	CN35203	PROTECTOR RUBBER
26	CN35247	LABEL
27	CN35210	WARNING LABEL
28	CN35074	TRIGGER LOCK DIAL
29	KK23507	SPRING 3507
30	CN35075	TRIGGER LOCK LEVER
31	FF21235	SPRING PIN 3X30
32	CN35195	END CAP SEAL
33	CN35241	END CAP
34	BB40210	SCREW M5X20
35	HH19125	O-RING A1.6X4.2 CN65064
36	HH11125	O-RING AP12 CN65086
37	HH11138	O-RING AP20
38	CN33909	TRIGGER VALVE HOUSING
39	FF30161	PIN 161
40	HH11119	O-RING AP6 N10027
41	HH11209	O-RING 1BP7 N10028
42	CN32246	PILOT VALVE(REPLACES CN31589)
43	HH11113	O-RING AP9 N5528
44	KK23129	COMPRESSION SPRING 3129
45	CN35128	TRIGGER VALVE STEM
46	HH11901	O-RING 1.4 X 2.5 CN65020
47	CN33910	TRIGGER VALVE CAP
48	CN35059	CONTACT ARM GUIDE B
49	KK23282	COM. SPRING 3282
50	CN35002	ARM GUIDE

51	CN35001	TRIGGER
52	CN35115	CONTACT LEVER
53	FF22402	SPRING PIN 3X16 (LIGHT LOAD)
54	KK23653	COMP. SPRING 3653
55	CN35004	CONTACT BUMPER
56	CN35127	LEVER
57	CN34500	SPRING, LEVER
58	CN35003	CONTACT ARM A
59	CN35007	ADJUST DIAL
60	HH11124	O-RING AP10 T29045(FORMER HH90124 & TA1
61	CN35254	NOSE
62	BB40220	SCREW M6X20
63	CN35166	LATCH A
64	KK23284	SPRING 3284
65	FF41502	STEP PIN 1502
66	CN35192	DOOR
67	FF21229	W.S.PIN 3X20
68	EE39602	WASHER 7 CN65059 N10056(FORMER EE39601/EE396
69	CN33679	DOOR LUTCH
70	KK33261	TORSION SPRING 3261 (REPLACES KK33169)
71	EE39609	RUBBER WASHER 1.8X6X2
72	FF31256	STRAIGHT PIN 1256
73	FF31252	PIN 1252
74	CN35191	CHECK PAWL
75	KK33171	TORSION SPRING 3171
76	KK23626	COMPRESSION SPRING 3626
77	CN35190	FEED PAWL
78	FF41288	PIN 1288
79	CN34695	FEED PISTON
80	HH11107	O-RING AP18
81	KK23504	COMPRESSION SPRING 3504
82	CN31755	FEED PISTON STOP
83	CN31756	SPRING COLLAR
84	JJ22408	C-RING 24
85	CN35006	CONTACT BOLT
86	HH11903	O-RING 1A 1.2 X 4 T29051(REPLACES TA15277)
87	JJ10404	E-RING 3.2
88	CN35208	CONTACT ARM B UNIT
89	CN80473	MAGAZINE COVER
90	CN31963	POST CAP
91	CN33884	NAIL SUPPORT
92	KK13051	SPRING 3051
93	CN30601	SPACER CN65091
94	CN30602	SPRING HOOK
95	CN35196	MAGAZINE
96	FF22203	W.S. PIN 4X40(FORMER FF21222)
97	EE31121	WASHER 1-5 (BLACK)
98	BB40432	SOC. HD. CAP SCREW(REPLACES TA15530)
99	CC49411	SPECIAL NUT M5(REPLACES TA15554)
100	KK23332	COM.SPRING 3332
101	CN35202	ADJUST DIAL COVER
102	CN35242	CONTACT ARM COVER
103	CN35206	DUST COVER

104	CN31083	HOOK, DUST COVER
105	CN35252	LABEL, TRIGGER LOCK
106	CN35210	WARNING LABEL
107	TA15789	LABEL,ADJUST DIAL
108	CN33896	CONTACT TOP B UNIT
109	CN80399	CONTACT TIP B